

AVIGILON™

TRUSTED SECURITY SOLUTIONS™



Video Surveillance Solutions

Product Brochure



Avigilon designs, develops, and manufactures solutions in video analytics, network video management software and hardware, surveillance cameras, and access control.

Our solutions have been installed at thousands of customer sites, including school campuses, transportation systems, healthcare centers, public venues, critical infrastructure, prisons, factories, casinos, airports, financial institutions, government facilities, and retailers.

With manufacturing facilities in Plano, USA and Richmond, Canada, as well as regional offices around the world, Avigilon solutions are sold and supported throughout the global security market.

CONTENTS

Avigilon Quality and Support	4
Artificial Intelligence & Advanced Video Search	7
Video Management Software	10
Video Analytics	12
Unusual Motion Detection (UMD) Technology	14
Enhanced Bandwidth Management	15
Camera Technologies that Conquer the Dark	16
Cameras	18
HD Network Video Recorders (NVRs)	27
Network Security Workstations	30
ACC™ Edge Solutions (ES)	31
Avigilon Presence Detector (APD) Sensor	32
HD Video Appliances	33
Video Encoders	34
Connect With Avigilon	35



Exceptional Customer Service

Avigilon provides extensive customer service and 24/7 technical support (by phone or online chat) for installed hardware and software. Advance replacement is available for products under warranty and we offer hassle-free returns under our return policy to ensure you are satisfied with your Avigilon solutions.



North American Manufacturing Facilities

Avigilon is proud to be a North American manufacturer of trusted security solutions, with Canadian and American expertise and globally sourced materials. Our state-of-the-art facilities in Richmond, British Columbia, and Plano, Texas ensure quality control and efficiency throughout the manufacturing process. By manufacturing in North America we are better able to control every aspect of the process, while continually enhancing the customer's experience.



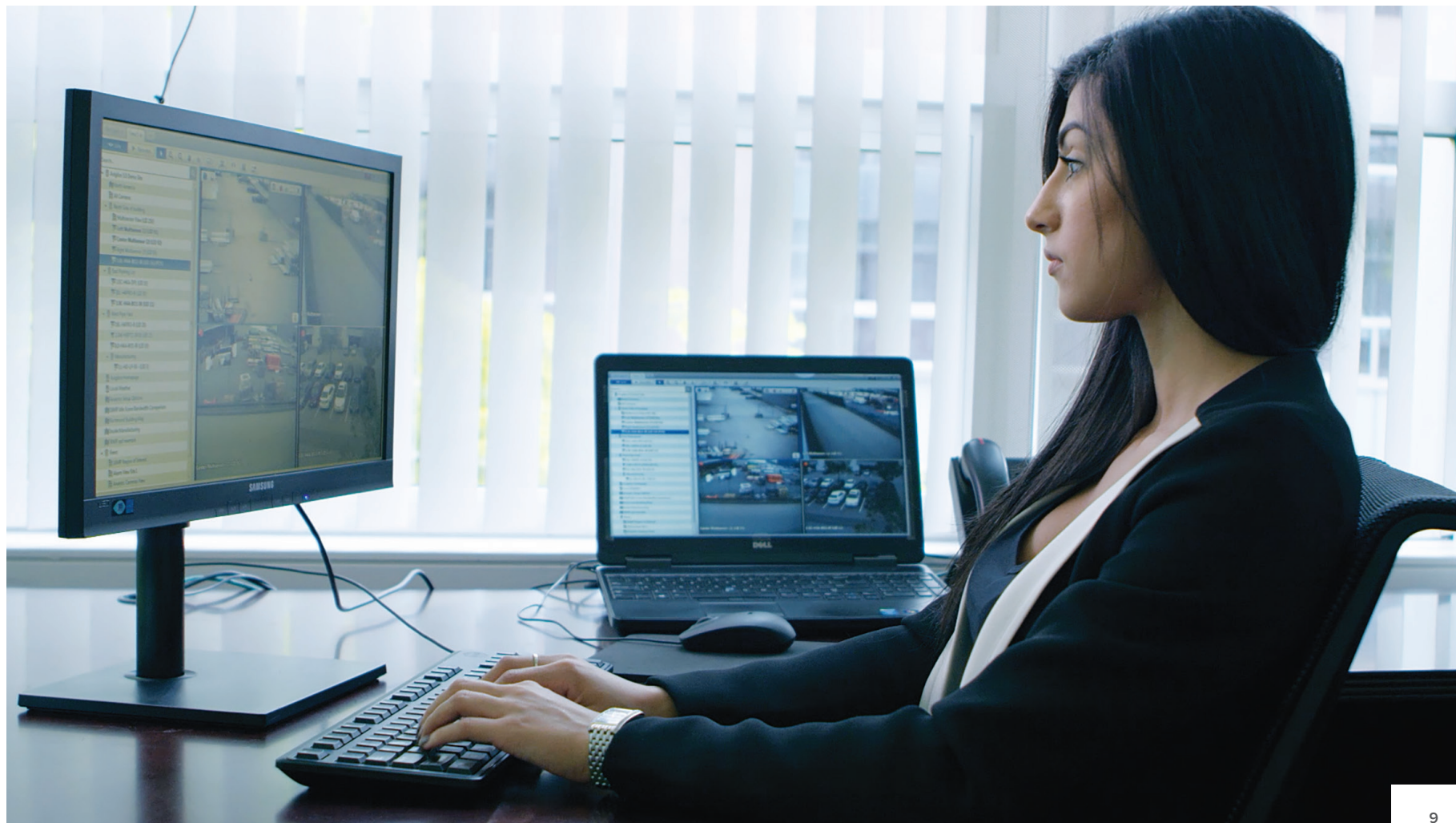


Solutions that help bring focus and attention to what's important

At Avigilon we believe that deep learning artificial intelligence (AI) has the potential to solve some of the most critical challenges our industry faces today. By applying AI to our video analytics technology, we can focus human attention on what matters most, so our systems can provide powerful insights for effective decision making.

Enabling faster, more efficient video search

Avigilon is rapidly expanding its artificial intelligence driven video analytics technology to allow users to quickly search volumes of video data to identify important information. Our new search features are designed to enhance the way users interact with their systems, dramatically improve event response times and help make video actionable.



Video Management Software

Avigilon Control Center (ACC) 6, the latest and most advanced version of our video management software, enhances the way security professionals manage and interact with high-definition video.

Enabling faster responses and reduced investigations times, ACC 6 software combines a powerful and intuitive interface with an advanced search technology called Avigilon Appearance Search™.

ACC 6 software natively interacts with our Access Control Manager (ACM) system for a full-featured security solution.



ACC 6 Software with Avigilon Appearance Search Technology

ACC software records and manages video from the Avigilon line of megapixel cameras — from 1 MP to 5 MP and 4K to 7K. Its easy-to-use interface enables personnel to evaluate and respond to events with minimal training.

ACC software is a securely-distributed network platform with enterprise-class reliability. It efficiently captures and stores high-definition video while intelligently managing bandwidth and storage using HDSM™ technology.

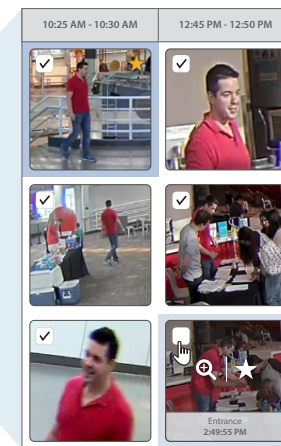
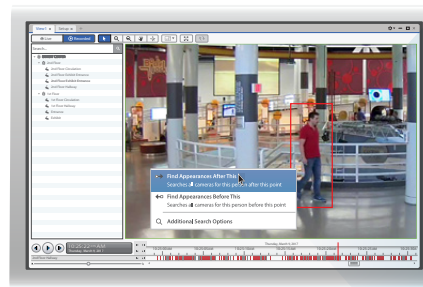
Pre-installed on HD Video Appliances, HD Network Video Recorders (NVRs), HD NVR Workstations, ACC Edge Solution (ES) HD hardware and the H4 Edge Solution (ES) camera line, ACC software also works as standalone software to meet the needs of a wide variety of installations.

Avigilon Appearance Search technology is the new way to search video

This innovative, deep learning, artificial intelligence (AI) search engine sorts through hours of footage with ease to quickly locate a specific person or vehicle of interest across an entire site.

It dramatically improves incident response time and enhances forensic investigations by enabling operators to build robust video evidence and create a powerful narrative of events.

Avigilon Appearance Search technology now incorporates the characteristics of a person's face, as well as shape, size, texture, color, clothing and accessories when searching for a person. Adding faces to Avigilon Appearance Search technology increases speed and accuracy by using the unique combined features of a face based on hair color, texture and other facial features and accessories, enabling the technology to understand that it is searching for the same person, even if items such as their clothing change over time.

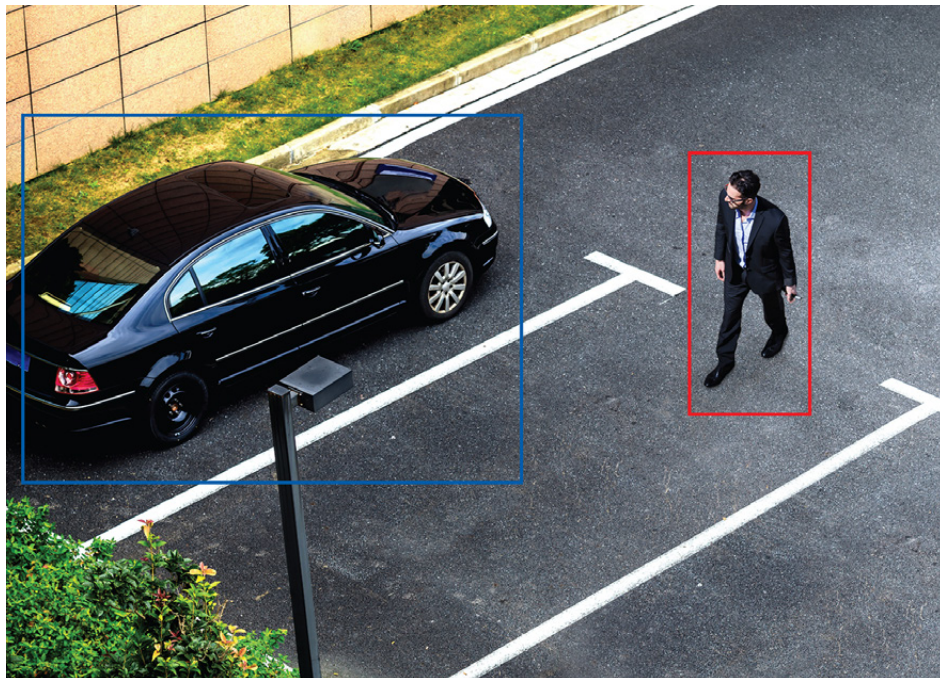


Video Analytics

Avigilon self-learning video analytics extends the effectiveness of your security personnel by providing effective monitoring and enabling proactive, real-time response from your team.

Built from the ground up to manage high-definition video, Avigilon offers analytics embedded in Avigilon cameras up to 5K (16 MP) resolution, with analytics events and alarms that can be managed, viewed and searched through an intuitive user interface.





Self-learning Video Analytics Technology

Avigilon self-learning video analytics technology uses advanced video pattern-based algorithms to recognize the movements and characteristics of people and vehicles, while ignoring any activity that isn't relevant to a scene. Teach-by-example technology enables users to provide feedback about the accuracy of alarms, to refine the device's self-learning capabilities.

Easy to install and use

Avigilon self-learning video analytics technology is designed to detect and learn the surrounding scene upon initial set up, adapting to changes without manual calibration.

Unusual Motion Detection (UMD) Technology

UMD is an advanced artificial intelligence (AI) technology that brings a new level of automation to surveillance and is designed to reveal events that may have otherwise been missed.

Without any predefined rules or setup, UMD technology continuously learns what typical activity in a scene looks like, and then detects and flags unusual motion.

This allows operators to search through large volumes of footage faster, as UMD focuses their attention on the atypical events that may need further investigation, reducing hours of work to minutes.



Enhanced Bandwidth Management

Avigilon cameras and software offer exceptional high-definition video quality while reducing bandwidth from the camera to the Avigilon Control Center (ACC) client.

Idle Scene Mode Technology

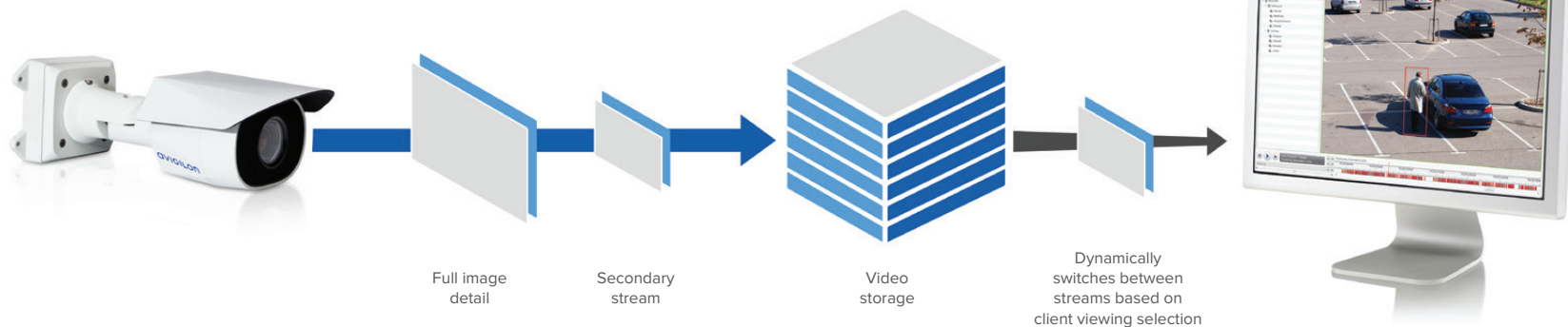
Idle Scene Mode technology allows the camera to reduce storage and bandwidth for continuous recording of scenes with no activity. When there is no classified object detection or pixel change motion, the camera will conserve bandwidth by switching to a reduced frame rate.

HDSM SmartCodec™ Technology

HDSM SmartCodec technology enables Avigilon H4 Platform cameras to enhance compression levels for regions in a scene to reduce bandwidth by up to 50 percent compared to standard H.264 compression.

High Definition Stream Management (HDSM)™ Technology

HDSM technology reduces bandwidth from server to client by dynamically sending the optimal image detail for the user's viewing requirements.



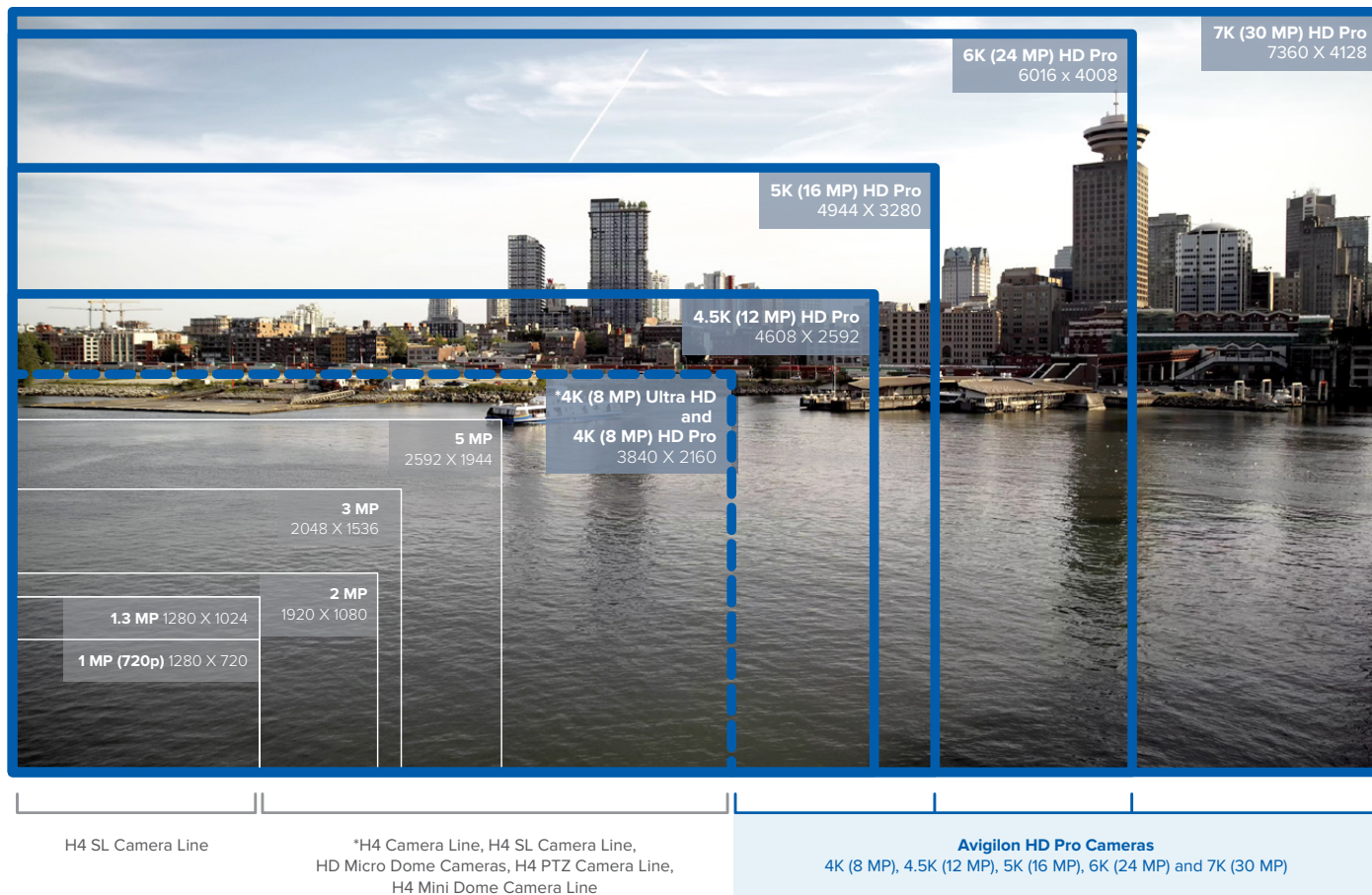
Conquer the dark

When it comes to video surveillance, lighting is one of the most important factors in image quality. As lighting conditions fade and shift depending on the time of day and environmental factors, a surveillance camera's ability to capture evidentiary detail can decrease. Our new H4 IR PTZ and H4 Thermal camera lines help overcome challenging lighting conditions, and environmental factors like smoke and fog. Both cameras combine exceptional image performance with on-board patented Avigilon self-learning video analytics to help operators detect, verify, and act on events in challenging lighting conditions.



Cameras

Avigilon offers a broad range of high-definition cameras – from 1 MP to 5 MP and 4K to 7K (based on horizontal resolution) – that are available in a variety of formats, including dome, bullet and fixed.





HD Pro Cameras

Avigilon Pro cameras start at 4K and go up to the industry's first single-sensor 7K (30 MP) camera, capturing high-quality, detailed images over vast areas, while providing wide area coverage options. Avigilon 4K, 4.5K, 5K, 6K and 7K cameras are built on the H4 platform, to deliver greater processing power, increased frame rates and improved image quality, while High Definition Stream Management (HDSM) and HDSM SmartCodec technologies intelligently manage storage and bandwidth.



H4 Cameras

H4 cameras, available in 1 MP to 5 MP and 4K Ultra HD (8 MP) resolutions, operate on the Avigilon next-generation H4 platform to offer self-learning video analytics, greater resolution performance, and Wide Dynamic Range (WDR) support. They also feature HDSM SmartCodec bandwidth-management technology and LightCatcher technology for superior low-light performance.*

KEY FEATURES

HDSM SmartCodec Technology

Self-Learning Video Analytics**

LightCatcher™ Technology

BENEFITS

HDSM SmartCodec technology automatically optimizes compression levels for regions in a scene to maximize bandwidth savings*, minimize storage consumption and maintain high-quality imaging.

Detects and learns the surrounding scene upon initial setup, adapts to changes without manual calibration and notifies operators when important events occur.

Collects significantly more detail from a low-light scene to deliver higher quality color images with far less image noise than other low-light cameras.

*When activated, HDSM SmartCodec technology can reduce bandwidth by up to 50 percent compared to standard H.264 compression.

**Self-learning video analytics available on all resolutions except for 6K (24 MP) and 7K (30 MP).

KEY FEATURES

HDSM SmartCodec Technology

Self-Learning Video Analytics

Remote Zoom and Focus

Automatic IR Cut Filter

BENEFITS

HDSM SmartCodec technology automatically optimizes compression levels for regions in a scene to maximize bandwidth savings**, minimize storage consumption and maintain high-quality imaging.

Detects and learns the surrounding scene upon initial setup, adapts to changes without manual calibration and notifies operators when important events occur.

With remote zoom and focus included in the lens, installation only requires mounting and aiming.

Provides superior low-light performance and sensitivity to IR illuminators that enable true color imaging throughout the day.

*WDR technology available on 1 MP to 3 MP models only. LightCatcher technology available on 1 MP to 5 MP models.

**When activated, HDSM SmartCodec technology can reduce bandwidth by up to 50 percent compared to standard H.264 compression.



H4 Bullet Cameras

H4 Bullet cameras, available in 1 MP to 5 MP and 4K Ultra HD (8 MP) resolutions, are suitable for seeing objects and activity in complete darkness. These cameras also feature WDR support, HDSM SmartCodec technology, adaptive IR technology and innovative LightCatcher technology for superior low-light performance.*

KEY FEATURES

HDSM SmartCodec Technology

Self-Learning Video Analytics

Adaptive IR

Lens Options

BENEFITS

HDSM SmartCodec technology automatically optimizes compression levels for regions in a scene to maximize bandwidth savings**, minimize storage consumption and maintain high-quality imaging.

Detects and learns the surrounding scene upon initial setup, adapts to changes without manual calibration and notifies operators when important events occur.

Adaptive IR technology automatically adjusts the IR beam width and illumination levels to provide consistent lighting regardless of scene conditions.

3-9 mm, 9-22 mm and 4.3-8 mm lens.

*WDR technology available on 1 MP to 3 MP models only. LightCatcher technology available on 1 MP to 5 MP models.

**When activated, HDSM SmartCodec technology can reduce bandwidth by up to 50 percent compared to standard H.264 compression.



H4 Dome Cameras

H4 Dome cameras, available in 1 MP to 5 MP and 4K Ultra HD (8 MP) resolutions, operate on the Avigilon H4 platform. These cameras offer WDR support, self-learning video analytics, HDSM SmartCodec technology and innovative LightCatcher technology for superior low-light performance.*

KEY FEATURES

HDSM SmartCodec Technology

Self-Learning Video Analytics

Adaptive IR

BENEFITS

HDSM SmartCodec technology automatically optimizes compression levels for regions in a scene to maximize bandwidth savings**, minimize storage consumption and maintain high-quality imaging.

Detects and learns the surrounding scene upon initial setup, adapts to changes without manual calibration and notifies operators when important events occur.

Adaptive IR technology automatically adjusts the IR beam width and illumination levels to provide consistent lighting regardless of scene conditions. This feature is optional for H4 Dome cameras.

*WDR technology available on 1 MP to 3 MP models only. LightCatcher technology available on 1 MP to 5 MP models.

**When activated, HDSM SmartCodec technology can reduce bandwidth by up to 50 percent compared to standard H.264 compression.



H4 Edge Solution (ES) Camera Line

The H4 ES camera line combines high-definition imaging, self-learning video analytics, network video recorder functionality, and embedded Avigilon Control Center (ACC) video management software to create an all-in-one intelligent surveillance solution. This camera line records video directly to an onboard solid-state drive, eliminates the need for a separate network video recorder and reduces installation and system costs.



H4 SL Camera Line

The H4 SL camera is our easiest-to-install camera yet, decreasing installation time by up to 50 percent. Available in bullet and dome formats, it supports a variety of configurations, including surface, in-ceiling and pendant mounts that can easily be alternated. The H4 SL camera comes in 1.3, 2 and 3 MP camera resolutions, providing exceptional image quality in a broad range of lighting environments.

KEY FEATURES

HDSM SmartCodec Technology

Self-Learning Video Analytics

Onboard Storage

Complete Video Management

BENEFITS

HDSM SmartCodec technology automatically optimizes compression levels for regions in a scene to maximize bandwidth savings*, minimize storage consumption and maintain high-quality imaging.

Detects and learns the surrounding scene upon initial setup, adapts to changes without manual calibration and notifies operators when important events occur.

Up to 256 GB onboard storage in a solid-state drive (SSD), for continuous operation.

Embedded with ACC video management software.

*When activated, HDSM SmartCodec technology can reduce bandwidth by up to 50 percent compared to standard H.264 compression.

KEY FEATURES

HDSM SmartCodec Technology

Quick and Flexible Installation

Exceptional Image Quality

BENEFITS

HDSM SmartCodec technology automatically optimizes compression levels for regions in a scene to maximize bandwidth savings*, minimize storage consumption and maintain high-quality imaging.

The H4 SL camera's modular design enables it to snap into the base of your choice.

Using LightCatcher, Content Adaptive Infrared (IR) and Dual Exposure WDR technologies, our 1.3, 2 and 3 MP H4 SL cameras provide exceptional image quality in a broad range of lighting environments.

*When activated, HDSM SmartCodec technology can reduce bandwidth by up to 50 percent compared to standard H.264 compression.



H4 PTZ Camera Line

The H4 PTZ camera line combines high performance with self-learning video analytics, providing users the versatility, functionality and intelligence to proactively respond to events as they occur. The H4 PTZ camera line is available in 1 and 2 MP camera resolutions, both featuring continuous 360° rotation, enabling operators to track activity in any direction and collect detailed video evidence.

KEY FEATURES

HDSM SmartCodec Technology

Self-Learning Video Analytics

High Frame Rate

Up to 45x Zoom Capabilities

BENEFITS

HDSM SmartCodec technology automatically optimizes compression levels for regions in a scene to maximize bandwidth savings*, minimize storage consumption and maintain high-quality imaging.

Can detect and learn the home position scene upon initial setup, adapts to changes without manual calibration and notifies operators when important events occur.

Up to 60 frames per second (fps) for highly detailed imaging of fast-moving objects.

For high-quality, detailed images when zooming in.

*When activated, HDSM SmartCodec technology can reduce bandwidth by up to 50 percent compared to standard H.264 compression.



H4 IR PTZ Camera Line

The Avigilon H4 IR PTZ camera line is available in 1.3 and 2 MP camera resolutions and combines self-learning video analytics with zoomable infrared (IR) technology. The H4 IR PTZ camera allows users to see up to 250 meters (820 feet) in complete darkness. The camera's IR projection angle and distance automatically adjust based on camera zoom lens movement, ensuring the scene is illuminated consistently across the field of view for high-quality, detailed images.

KEY FEATURES

Fast and Precise Pan-Tilt-Zoom Capabilities

Zoomable IR Illumination

Up to 45x Zoom Capabilities and Continuous 360° Rotation

Durable Vandal- and Weather-Resistant Housing

BENEFITS

Enables the operator to easily detect and follow a moving object with a high level of precision and control.

IR illuminator automatically adjusts the IR intensity and angle according to the field of view to help ensure that the scene is illuminated uniformly.

Enables operators to easily zoom in and out to capture and monitor activity in almost any direction. Choose from 45x zoom (1.3 MP) and 30x zoom (2 MP) lens options based on site requirements.

Available with a built in wiper to keep the window surface clear of moisture. Camera housing is dust-resistant and designed to withstand tough environments with IK 10 vandal resistance and IP66 certification.



H4 Mini Dome Camera Line

The H4 Mini Dome is the smallest and most discreet camera within the Avigilon H4 platform that combines Avigilon quality at an entry level price point. It provides exceptional image quality with an innovative and modular design that snaps into place, allowing users to easily switch between surface, in-ceiling and pendant mounts.

KEY FEATURES

Small Camera
Footprint and Profile

BENEFITS

Standard surface mount model has a footprint of only 2.8 inches, extending 2.0 inches from the installation surface. The in-ceiling adapter offers a profile of only 1.5 inches, with a footprint of 3.5 inches.

HDSM SmartCodec
Technology

HDSM SmartCodec technology automatically optimizes compression levels for regions in a scene to maximize bandwidth savings*, minimize storage consumption and maintain high-quality imaging.

Wide Dynamic Range
(WDR)

Dual exposure true Wide Dynamic Range (WDR) technology captures clear images in simultaneous dark and bright lighting conditions.

Adaptive IR
Technology

Automatically adjusts the IR beam width and illumination levels to provide consistent lighting regardless of scene conditions.

*When activated, HDSM SmartCodec technology can reduce bandwidth by up to 50 percent compared to standard H.264 compression.



H4 Thermal Camera Line

Operating beyond the visible spectrum, the H4 Thermal camera line is designed to detect the movement of people and vehicles even in areas with poor visibility, challenging lighting conditions, absolute darkness and partly camouflaged scenes. Through Avigilon self-learning video analytics, operators receive notification of detected activity that may require further investigation, helping them take decisive action when needed.

KEY FEATURES

Avigilon
Self-Learning
Video Analytics

BENEFITS

Combined with thermal imaging, Avigilon self-learning video analytics accurately detect the movement of people and vehicles in a wide range of environments.

320x256 Uncooled
Thermal Sensor
Technology with
Athermalized Lens

Detect people and vehicles in poorly lit areas, challenging lighting conditions, and absolute darkness. Offers accurate detection even when visual camouflage or visual obscurants, such as smoke, dust and foliage, are present.

IK 10 Vandal
Resistance and
IP66 Certified

Durable, outdoor rated camera built for extended life in challenging weather and climate conditions.



H4 Fisheye Camera Line

The H4 Fisheye camera line offers a high-resolution, 360-degree panoramic view with no blind spots. Available in 6 and 12 MP camera resolutions, this cost-effective, easy-to-install solution provides broad coverage with fewer cameras.

KEY FEATURES

HDSM SmartCodec Technology

Fisheye Lens

Adaptive IR Technology

High Frame Rate Support

BENEFITS

HDSM SmartCodec technology automatically optimizes compression levels for regions in a scene to maximize bandwidth savings*, minimize storage consumption and maintain high-quality imaging.

High-resolution 360-degree panoramic view of a scene with no blind spots.

Automatically adjusts the IR beam width and illumination levels to provide consistent lighting regardless of scene conditions.

Available in 6 and 12 MP camera resolutions, providing leading frame rates of up to 30 and 20 frames per second (fps) respectively.

*When activated, HDSM SmartCodec technology can reduce bandwidth by up to 50 percent compared to standard H.264 compression.



HD Multisensor Cameras

The HD Multisensor camera delivers superior image detail and offers a flexible approach to covering vast areas. Available in 3K (9 MP) or 4K (12 MP) sensor configurations, each equipped with a remote zoom and focus lens, one HD Multisensor dome can replace a PTZ camera or multiple fixed cameras.

KEY FEATURES

Superior Image Detail

Flexible Installation

Remote Zoom and Focus

BENEFITS

Available in 9 MP or 12 MP resolutions for high-definition imaging, all powered by HDSM technology.

Manually configurable sensors move on three axes for a variety of coverage options in virtually any environment.

With remote zoom and focus included in the lens, installation only requires mounting and aiming.



JPEG2000 HD Panoramic Dome Cameras

JPEG2000 HD panoramic dome cameras feature four 2 MP sensors for a total resolution of 8 MP. Suitable for monitoring indoor and outdoor environments for sectors such as education, banking and retail, a single installation provides 180 or 360-degree, high-resolution coverage with lenses that are pre-focused for no-fuss installation.

KEY FEATURES

Panoramic
Wide-Area
Coverage

BENEFITS

Four 2 MP sensors provide 180° or 360° coverage in high-definition from a single camera, reducing installation needs.

Easy Installation

Factory-installed, pre-focused lenses do not require adjustment during installation.

Multi-Megapixel

Live- and post-incident digital PTZ reduce the number of camera installations.



HD Micro Dome Cameras

The HD Micro Dome camera, available in 1 MP and 2 MP resolutions, is our smallest high-definition IP dome camera, enabling a cost-effective transition to HD video surveillance and all the advantages of ACC software. Operating on the H3 platform, it features HDSM technology to intelligently manage storage and bandwidth.

KEY FEATURES

Flexible
Installation

BENEFITS

Small form factor makes it easy to install, allowing for a multitude of installation possibilities in retail and commercial settings, or building entrances and hallways.

High-Definition
Resolution

Provides exceptional image detail in 1 and 2 MP resolutions.

Three Axes of
Rotation

Enables the camera to achieve almost every angle with flexible pan, tilt and rotation options for wide scene coverage.



License Plate Recognition (LPR)

HD License Plate Recognition provides single- and multi-lane LPR with HD accuracy from a single camera. Fully integrated within ACC software and combined with Avigilon HD LPR Capture Kits, high-definition LPR captures license plates with high accuracy in a wide variety of conditions, 24 hours a day.

KEY FEATURES

High-Definition Resolution

Single Camera, Multiple Lanes

Automatic Worldwide License Plate Recognition

BENEFITS

High-definition resolution delivers images captured in accurate and precise detail.

Provides wide coverage with fewer cameras, helping to reduce installation and maintenance costs.

Supports a broad range of global license plate types.

HD Network Video Recorders (NVRs)

Avigilon HD NVRs provide superior performance and reliability for video surveillance applications. Every Avigilon HD NVR model includes pre-installed ACC video management software, high-performance, optimized recording technology, and a three-year Avigilon warranty with dedicated support. All HD NVRs are pre-configured with operating system and hard drive volumes, enabling quick deployment and RAID technology that provides increased system uptime and availability. Simply choose the HD NVR model that provides the storage and throughput that your system requires — exceptional reliability and performance is built in.



NVR Premium

The HD NVR Premium delivers the highest throughput, retention and availability in our NVR line. With the separation of its operating system from its video storage volumes and redundant hot-swappable components, the NVR Premium makes servicing simple, while helping to minimize disruptions from security operations.

KEY FEATURES

ACC Server Software
Preloaded and Configured

Supports Enterprise
Video Management

High Storage Density

Avigilon Appearance
Search Technology

BENEFITS

Plug-and-play network video recording solution for managing multi-megapixel IP cameras and analog cameras.

Provides up to 1670 Mbps of total throughput.

Achieves up to 137 TB of effective recording capacity in a RAID 6 hard drive configuration.

With an additional kit, Avigilon Appearance Search technology enables users to locate a specific person or vehicle of interest across an entire site.



NVR Standard

The HD NVR Standard line provides high throughput and retention without sacrificing availability. With the separation of its operating system from its video storage volumes and redundant hot-swappable components, the NVR Standard makes servicing simple, while helping to minimize disruptions from security operations.



NVR Value

The HD NVR Value line provides high performance and retention at a lower cost of ownership. It is a ready-to-deploy solution designed for single-site surveillance or when deploying across multiple remote sites.

KEY FEATURES

ACC Server Software
Preloaded and Configured

High-Performance
Video Management

High Storage Density

Avigilon Appearance
Search Technology

BENEFITS

Plug-and-play network video recording solution for managing multi-megapixel IP cameras and analog cameras.

Provides up to 900 Mbps of total throughput.

Achieves up to 36 TB of effective recording capacity in a RAID 6 hard drive configuration.

With an additional kit, Avigilon Appearance Search technology enables users to locate a specific person or vehicle of interest across an entire site.

KEY FEATURES

ACC Server Software
Preloaded and Configured

Flexible and Efficient
Video Management

Great Combination of
Recording and Redundancy

BENEFITS

Plug-and-play network video recording solution for managing megapixel IP and analog cameras.

Provides up to 384 Mbps of total throughput.

Achieves up to 18 TB of effective recording capacity in a RAID 5 hard drive configuration.

HD NVR3 MODELS	PRODUCT NUMBER	STORAGE	MAXIMUM RECORDING RATE	GIGABIT ETHERNET CONNECTIONS	10 GIGABIT ETHERNET CONNECTIONS
HD NVR Premium	HD-NVR3-PRM-137TB	137 TB	10 GbE: 1350 Mbps 1 GbE: 600 Mbps	4	2
	HD-NVR3-PRM-84TB	84 TB	10 GbE: 1350 Mbps 1 GbE: 600 Mbps	4	2
	HD-NVR3-PRM-48TB	48 TB	10 GbE: 1160 Mbps 1 GbE: 600 Mbps	4	2
HD NVR Standard	HD-NVR3-STD-36TB	36 TB	1 GbE: 450 Mbps	4	Optional
	HD-NVR3-STD-24TB	24 TB	1 GbE: 450 Mbps	4	Optional
HD NVR Value	HD-NVR3-VAL-18TB	18 TB	1 GbE: 256 Mbps	2	None
	HD-NVR3-VAL-12TB	12 TB	1 GbE: 256 Mbps	2	None
	HD-NVR3-VAL-6TB	6 TB	1 GbE: 256 Mbps	2	None

HD NVR3 Standard and Premium models are equipped with RAID 6 video storage array and RAID 1 system drive redundancy.

HD NVR3 Value models are equipped with RAID 5 video storage array.

Network Security Workstations



Avigilon offers a suite of high-performance workstations to support your security system. HD Network Video Recorder (NVR) workstations are configured to enable standalone viewing and recording from a single machine. HD remote monitoring workstations add another viewing station to your system with support for up to four high-resolution monitors, and up to 144 video streams.

HD NVR WORKSTATION	HD-NVRWS3-8TB
Storage	8 TB
Monitor Outputs	2
Gigabit Ethernet Connections	2
System Drives	1
4 MONITOR REMOTE MONITORING WORKSTATION	HD-RMWS3-4MN
Number of Cameras	Up to 144
Maximum Resolution	2560x1600
2 MONITOR REMOTE MONITORING WORKSTATION	HD-RMWS3-2MN
Number of Cameras	Up to 72
Maximum Resolution	3840x2160 (4K)

ACC™ Edge Solution (ES)



ACC Edge Solution (ES) HD Recorder

The ACC ES HD Recorder embeds core Avigilon technologies in a compact device to intelligently store HD video remotely, helping to eliminate bandwidth issues for centralized monitoring of remote sites. Choose storage capacities of 2 TB or 4 TB to store HD video up to 7K (30 MP) resolution with a recording rate of 80 Mbps and up to 30 images per second per channel.



ACC Edge Solution (ES) Analytics Appliance

The ACC ES Analytics Appliance is an all-in-one device that brings video analytics with edge video storage to a broad range of surveillance deployments. It adds Avigilon self-learning video analytics, network video recording and remote management to any connected video stream, whether it's an IP camera or an encoder. Enable self-monitoring mobile video surveillance features and direct mobile access to ACC ES Analytics Appliances with the ACC Mobile 3 Preview app, which is available for download from the App Store online store and the Google Play™ store.

KEY FEATURES

Complete Video Management

Compact Form Factor

Choice of Storage Capacities

Exceptional Resolution Support

BENEFITS

Embedded with ACC video management software.

Flexible installation with a small form factor for easy installation in an enclosure at a remote site.

Addresses varying retention requirements with 2 TB and 4 TB storage options.

Supports up to 7K (30 MP) resolution to deliver superior image detail and coverage.

KEY FEATURES

Complete Video Management

Self-Learning Video Analytics

Choice of Storage Capacities

Remote Management

BENEFITS

Embedded with ACC video management software.

Quickly detects and learns the surrounding scene upon initial setup, adapting to changes without manual calibration.

Addresses varying retention requirements with 2 TB and 4 TB storage options.

Enables streaming and playback through our high-performance remote monitoring workstations with ACC client software.

Avigilon Presence Detector (APD) Sensor



The APD™ is a sensor that combines self-learning analytics with impulse radar technology to detect the presence of a person with up to 99% accuracy, even if they have stopped moving or are hidden. This sensor is designed for indoor locations such as ATM rooms and other closed indoor vestibules within banks, pharmacies, retail stores and health care facilities.

KEY FEATURES

Accurate Detection

Small and Discreet

Ensures Complete Privacy

Impulse Radar Technology

Intelligent Analytics

BENEFITS

Extremely high accuracy in detecting the presence of a person at distances up to 9 meters from the sensor.

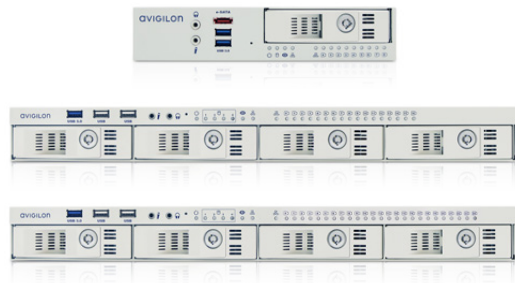
Can be hidden above ceiling panels or behind interior walls.

No ability to see ATM keypad or faces.

Can be used in constrained environments and those with challenging conditions. Has the ability to detect presence through blankets, cardboard, wood and drywall.

The indoor impulse radar sensor, combined with Avigilon self-learning analytics, scans and learns the environment, continuously adapting to reduce false positive events.

HD Video Appliances



The Avigilon HD Video Appliance is a powerful security combination that offers a video recorder, network switch and storage, all integrated into a single easy-to-install solution. This simplified system design reduces costs and installation times, helping you avoid the issues typically associated with installing a full security system.

KEY FEATURES

Pre-loaded with ACC Software

Embedded PoE Managed Switch

Range of Storage Capacities

Field Replaceable Video Storage Drives

BENEFITS

Reduces setup time and provides quicker access to high-definition video footage.

Quick and easy installation, with 8, 16 and 24 port options.

Addresses varying retention requirements with 2 TB to 24 TB storage options.

Reduces maintenance and repair time.

HD VIDEO APPLIANCE	8 PORT	16 PORT*	24 PORT*
Storage	2 or 4 TB	6, 9 or 12 TB (RAID 5)	12, 18 or 24 TB (RAID 5)
Total PoE Output	120 W	240 W	360 W
Avigilon Control Center (ACC) Software Edition	Core with 8 channels (Standard and Enterprise compatible)	Standard with 16 channels (Enterprise compatible)	Standard with 24 channels (Enterprise compatible)

*Coming soon

Video Encoders

Get the benefits of Avigilon high-definition surveillance while leveraging existing surveillance systems in a cost-effective way. Avigilon analog video encoders enable you to integrate your existing NTSC or PAL analog cameras into an Avigilon high-definition surveillance system.



Analog Video Encoders

Avigilon analog video encoders reduce bandwidth and storage requirements while capturing high-quality surveillance footage (in full resolution of up to 30 images per second per analog camera) for greater coverage and enhanced overall protection. The analog video encoder integrates with Avigilon Control Center (ACC) software and our line of hardware solutions to create a network-based surveillance solution.

KEY FEATURES

High Image Rates

PTZ Support

Alarm Inputs and Outputs

BENEFITS

Records up to 30 IPS at 4CIF resolution from each port for a total of 120 IPS from all four ports.

RS-485 Port available for controlling standard PTZ units.

Synchronizes recording with external alarms and integrates camera motion detection into existing alarm systems.

Connect With Avigilon



Subscribe to the **Avigilon YouTube channel** to preview exciting new Avigilon technologies, watch in-depth product videos and follow tutorials to get the most out of your Avigilon system.



Enroll in an instructor-led class or sign up for online training to learn how to install, configure and operate Avigilon products and software from our in-house experts: **[avigilon.com/training](https://www.avigilon.com/training)**.



Contact our global sales team to speak to a representative in your region and find out about events where you can demo Avigilon products for yourself: **asksales@avigilon.com**.



TRUSTED SECURITY SOLUTIONS™

Avigilon high-definition surveillance solutions provide the image detail, value and intuitive software you need to protect what's most valuable.

To learn more, visit [avigilon.com](https://www.avigilon.com)

© 2017-2018, Avigilon Corporation. All rights reserved. AVIGILON, the AVIGILON logo, AVIGILON CONTROL CENTER, ACC, ACCESS CONTROL MANAGER, ACM, HIGH DEFINITION STREAM MANAGEMENT (HDSM), HDSM, LIGHTCATCHER, HDSM SmartCodec, AVIGILON APPEARANCE SEARCH, AVIGILON PRESENCE DETECTOR, APD and TRUSTED SECURITY SOLUTIONS are trademarks of Avigilon Corporation. App Store is a trademark of Apple Inc. Google Play is a trademark of Google LLC. Other names or logos mentioned herein may be the trademarks of their respective owners. The absence of the symbols ™ and ® in proximity to each trademark in this document or at all is not a disclaimer of ownership of the related trademark. Avigilon Corporation protects its innovations with patents issued in the United States of America and other jurisdictions worldwide (see [avigilon.com/patents](https://www.avigilon.com/patents)). Unless stated explicitly and in writing, no license is granted with respect to any copyright, industrial design, trademark, patent or other intellectual property rights of Avigilon Corporation or its licensors.